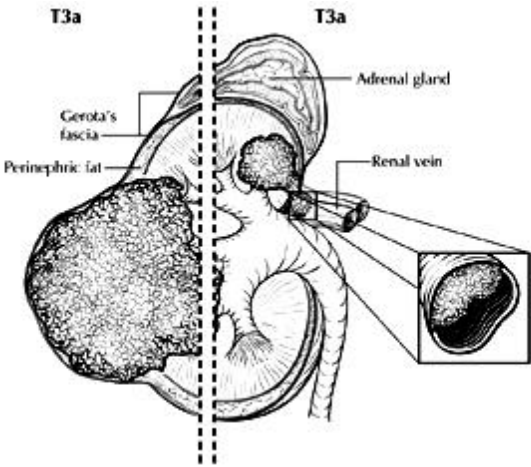


# Pathologic Staging (TNM 8th edition) (Required)

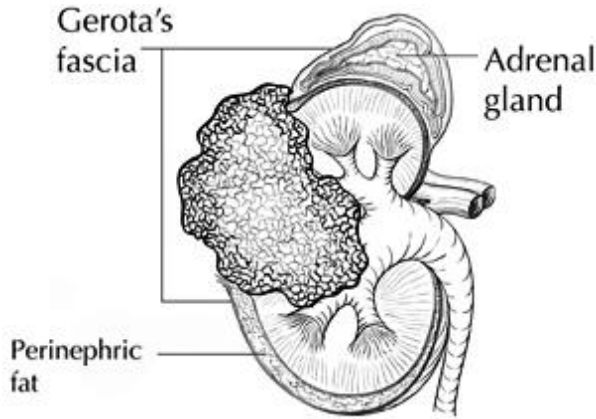
## Reason/Evidentiary Support

This dataset includes the AJCC TNM 8<sup>th</sup> edition<sup>2</sup> definitions. The implementation of AJCC TNM 8<sup>th</sup> edition has been deferred until January 2018 in some jurisdictions. UICC 7<sup>th</sup> edition<sup>43</sup> or AJCC 7<sup>th</sup> edition<sup>44</sup> may be useful in the interim.

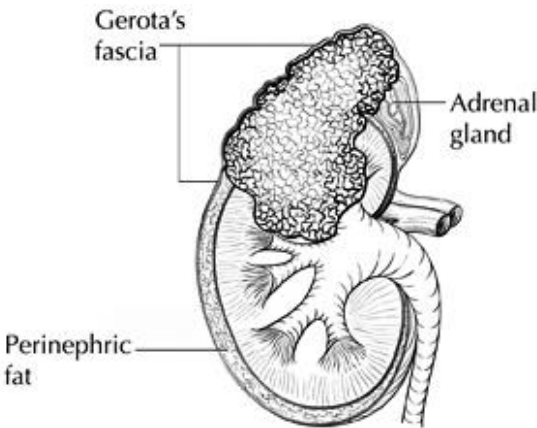
**Figure 2: T3a Invasion into perirenal and/or renal sinus fat but not beyond Gerota’s fascia.**



**Figure 3: T4 Invasion beyond Gerota’s fascia.**



**Figure 4: T4 Direct extension of tumour into ipsilateral adrenal gland.**



## References

2. Amin MB, Edge SB, Greene FL, *et al, eds. (2017) AJCC Cancer Staging Manual. 8th ed. New York: Springer*
43. Sobin L, Gospodarowicz M, Wittekind C and International Union against Cancer (eds) (2009). *TNM Classification of Malignant Tumours*, Wiley-Blackwell, Chichester, UK and Hoboken, New Jersey.
- 44 Edge SE, Byrd DR, Compton CC, Fritz AG, Greene FL and Trotti A (eds) (2010). *AJCC Cancer Staging Manual 7th ed.*, New York, NY.: Springer.