

Nuclear grade (Core)

Nuclear grade is a component of the Weiss multifactorial scoring system,¹ using a grading system similar to the Fuhrman criteria for renal cancer,² and as per the Weiss criteria, grade is assigned based the most abnormal area – refer to Figures 3 and 4.

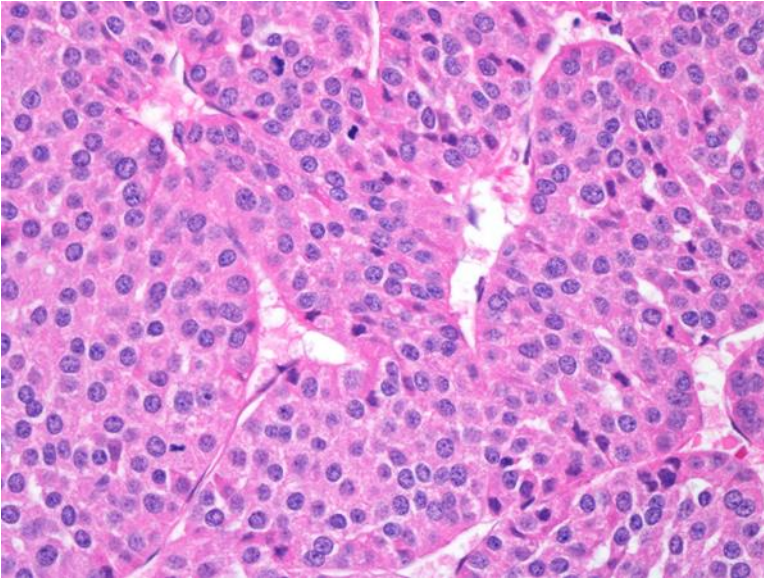


Figure 3: Low nuclear grade. Reproduced with permission courtesy of Dr Thomas Giordano.

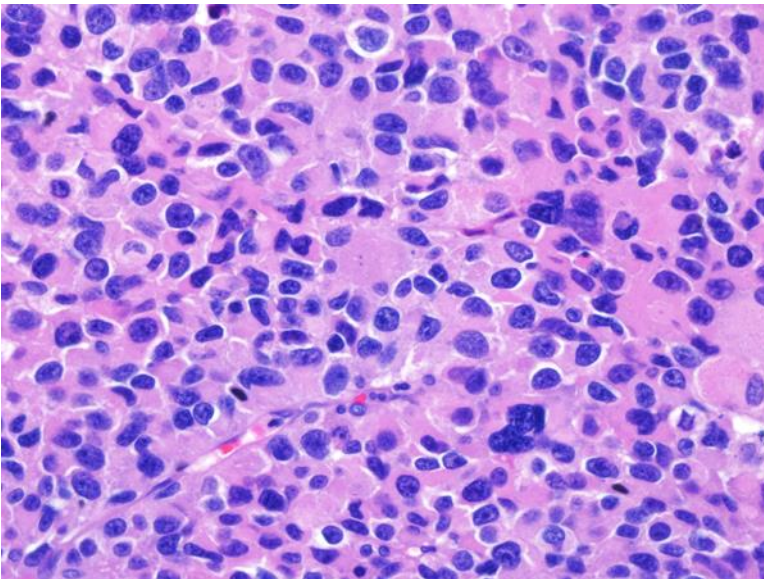


Figure 4: High nuclear grade. Reproduced with permission courtesy of Dr Thomas Giordano.

References

- 1 Weiss LM (1984). Comparative histologic study of 43 metastasizing and nonmetastasizing adrenocortical tumors. *Am J Surg Pathol* 8(3):163-169.

- 2 Giordano TJ, Chrousos GP, de Krijger RR, Gill AJ, Kawashima A, Koch CA, Medeiros JL, Merino MJ, Papathomas TG, Papotti M, Sasano HR and Weiss LM (2017). Adrenal Cortical Carcinoma. In: *WHO Classification of Tumours of Endocrine Organs, 4th ed*, Lloyd R, Osamura R, Klöppel G and Rosai J (eds), IARC Press, Lyon.